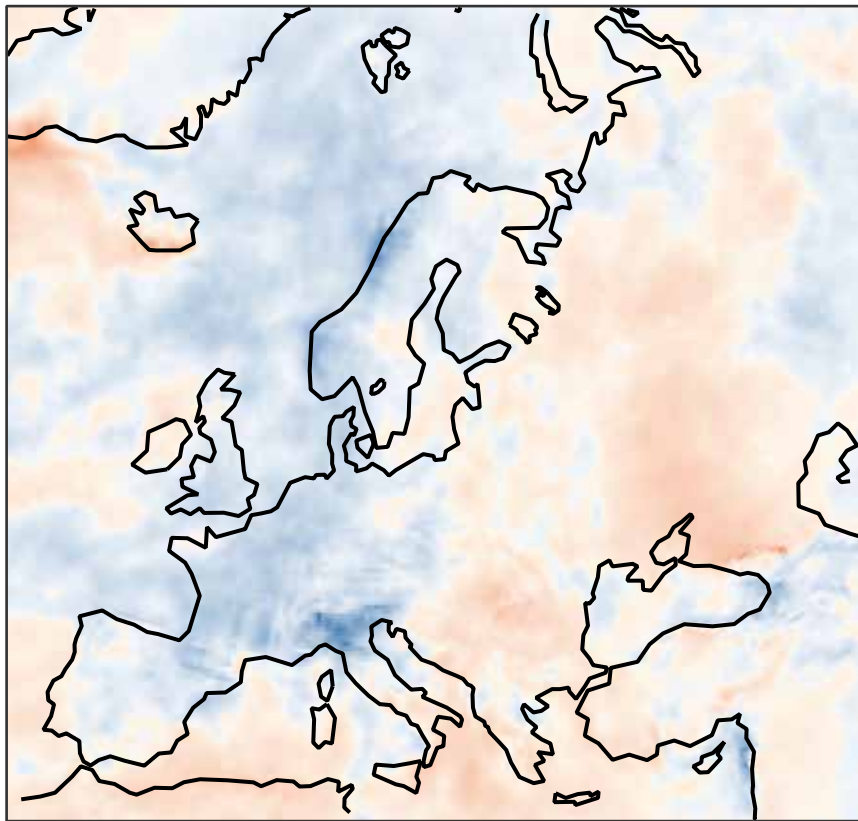




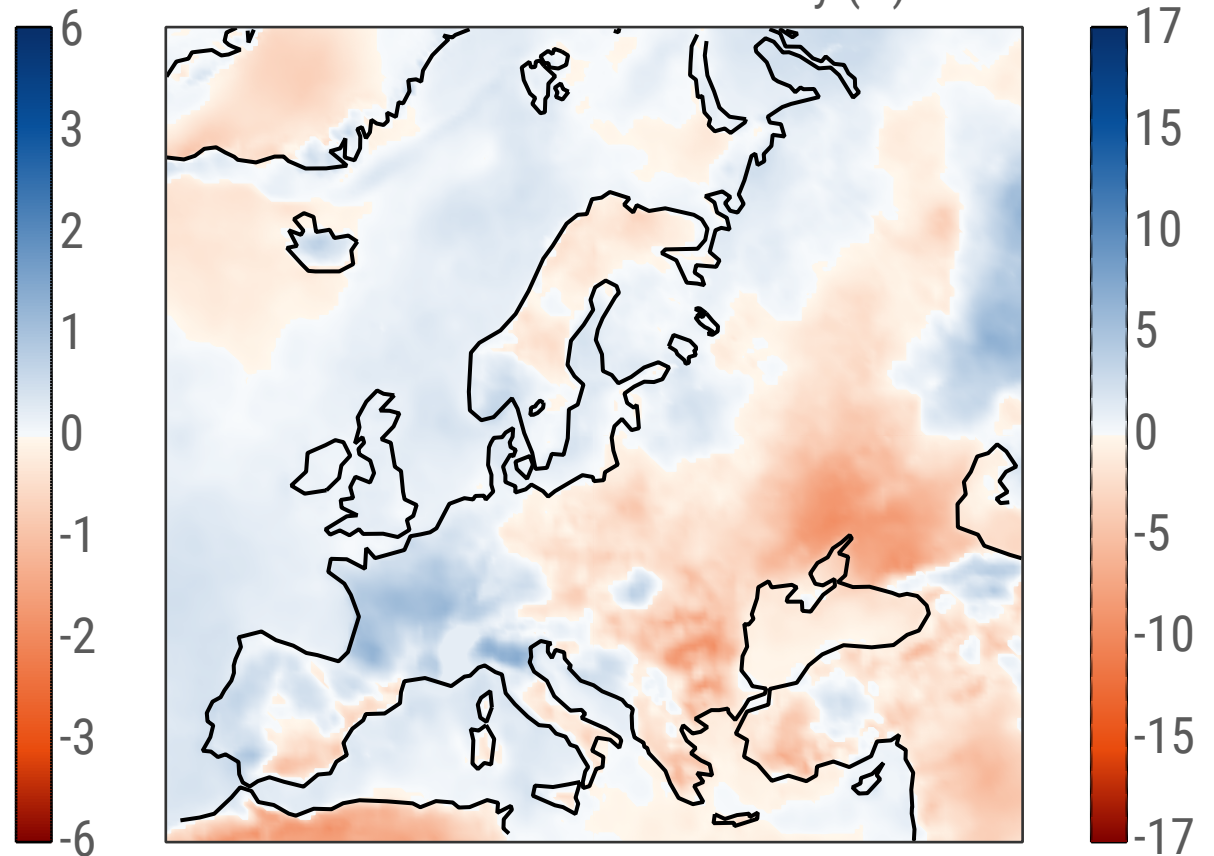
Hydrological variables and temperature anomalies in 2024

Data: ERA5, soil moisture ERA5-Land • Reference period: 1991-2020 • Credit: C3S/ECMWF

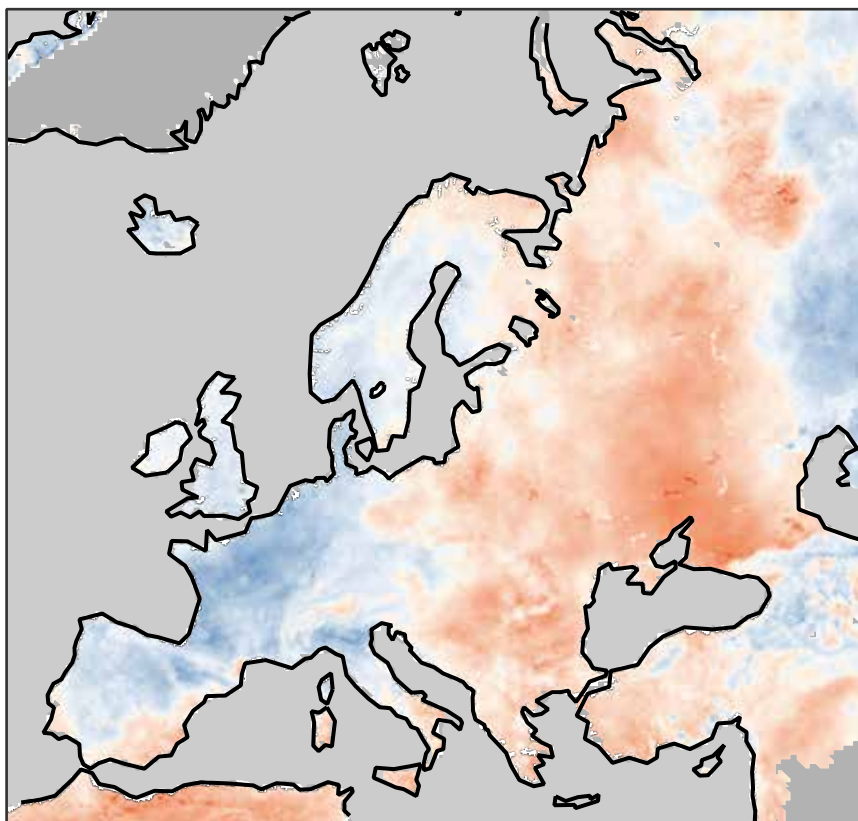
Precipitation (mm/day)



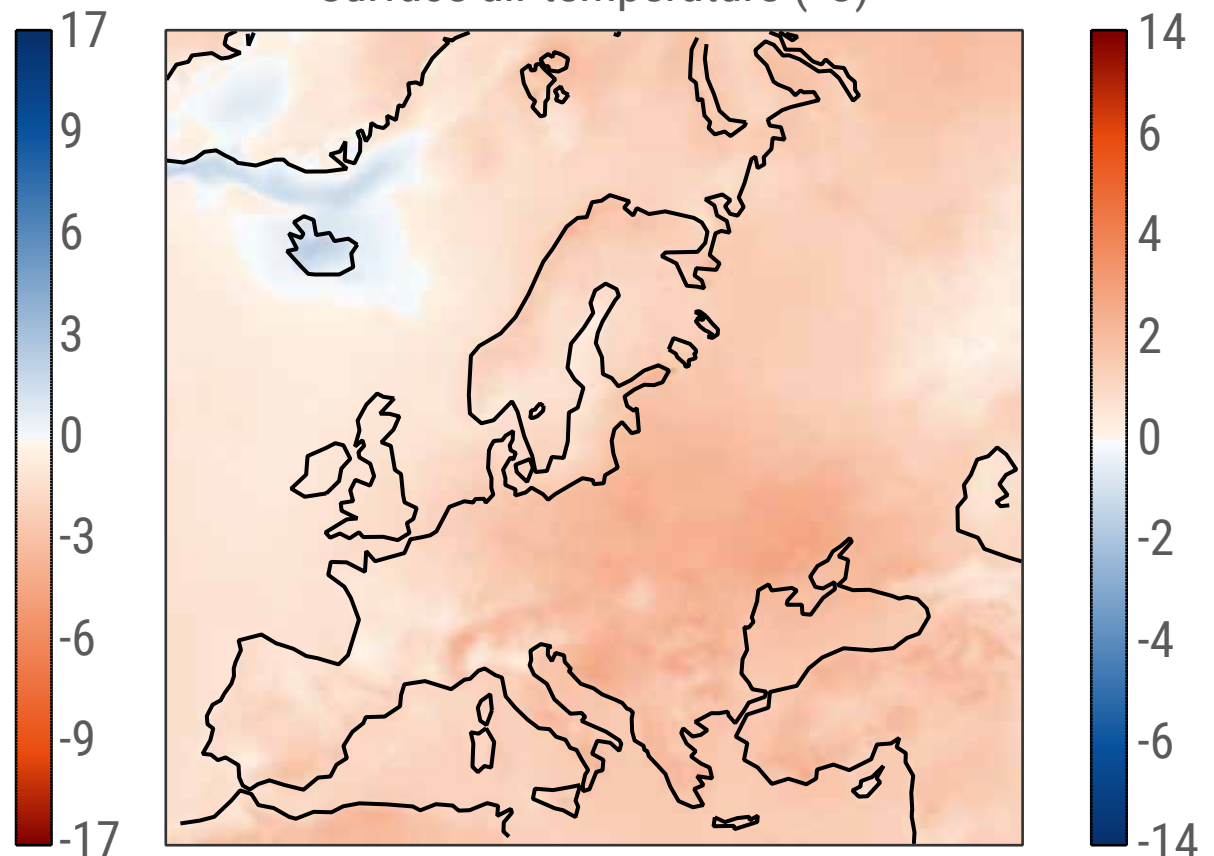
Surface air relative humidity (%)



0-7 cm volumetric soil moisture (%)



Surface air temperature (°C)



PROGRAMME OF
THE EUROPEAN UNION



IMPLEMENTED BY

